

Economic and Demographic Data
Greater Hidden Hills Community Development District
with comparisons to the metro Atlanta area and Marietta/Roswell

Based on ESRI data

(This company allows users to sort data based on customized and specific geographic areas.)

Prepared by Jan Costello
janrcostello@gmail.com

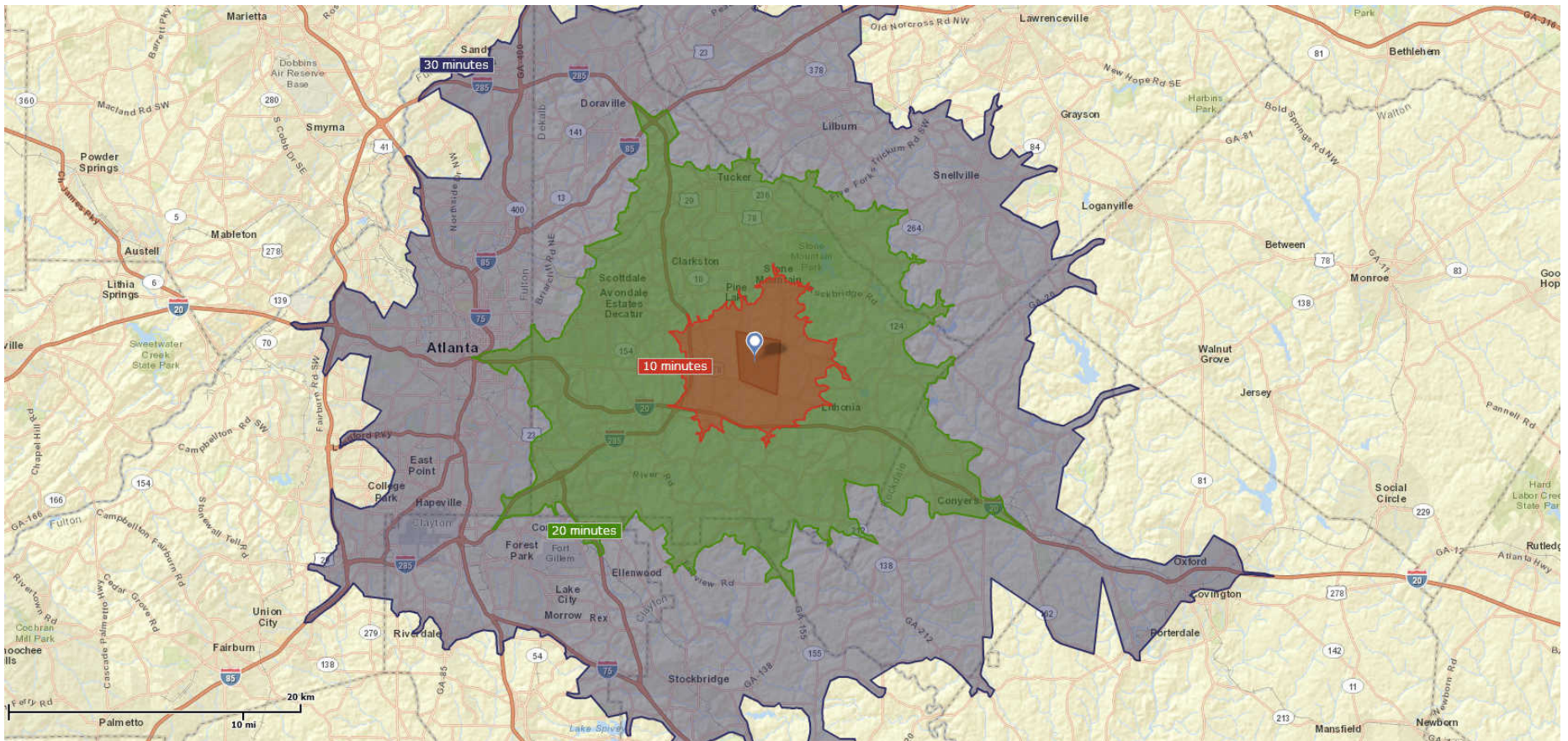
This section compares the Greater Hidden Hills area with the metro Atlanta area. It provides data on income, population, recreation expenditures, and health care expenditures.

The Greater Hidden Hills Community Development District

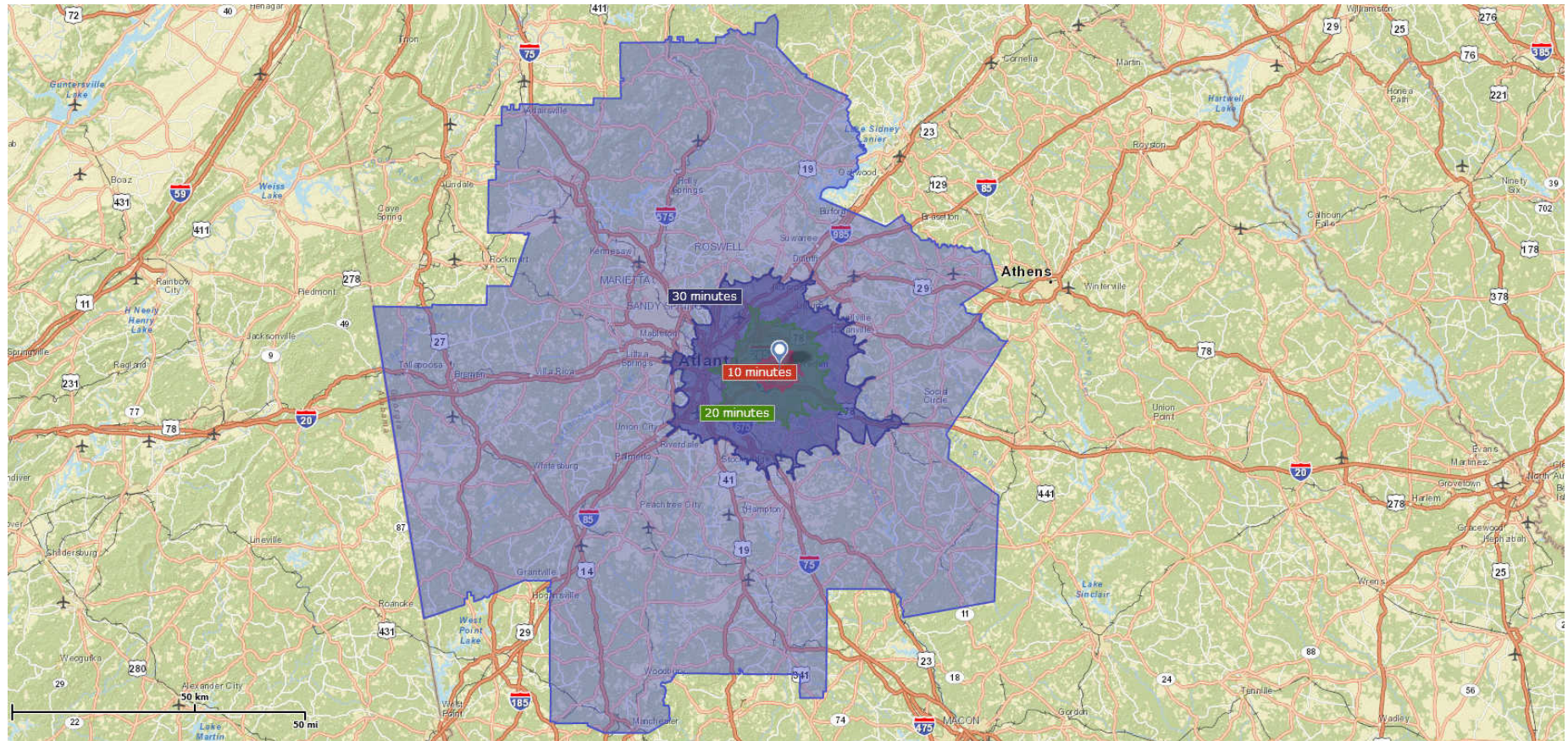
Dot: 5001 Biffle Road (the clubhouse), Stone Mountain, GA

Polygon: Greater Hidden Hills Overlay zone

Orange, green and blue shades: driving times from the dot (10, 20 and 30-minute increments)



Map of the Greater Hidden Hills Area within the Atlanta-Sandy Springs-Marietta, GA Metropolitan Statistical Area



**Income Change Comparison Greater Hidden Hills and Metro Atlanta
2012 - 2017**

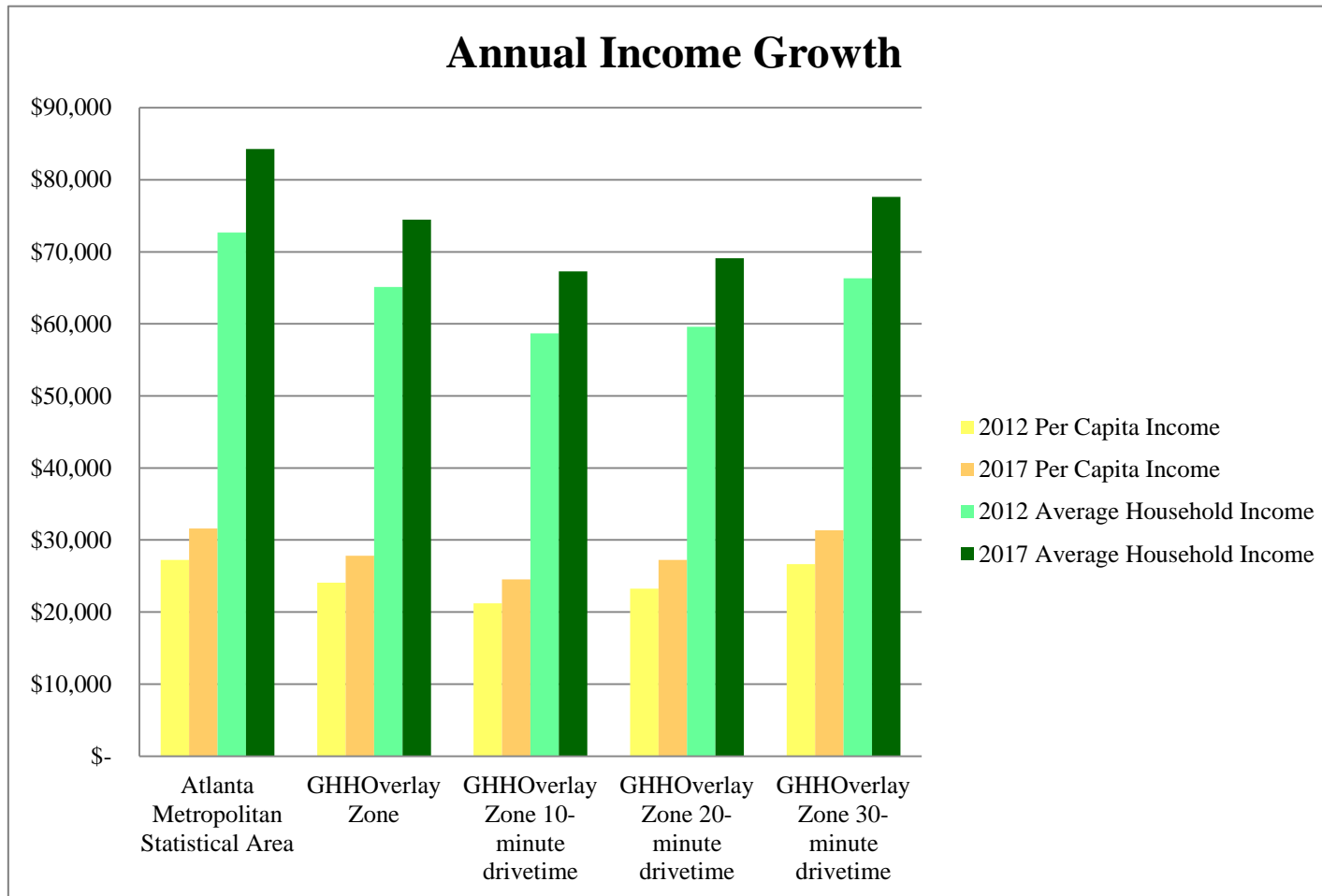
2012 and 2017 Income: per capita, household, and average

	2012 Per Capita Income	2017 Per Capita Income	Percent Change	Median Household Income	Median Household Income	Percent Change	Average Household Income	Average Household Income	Percent Change
Atlanta Metropolitan Statistical Area	\$ 27,224	\$ 31,596	16%	\$ 54,603	\$ 65,758	20%	\$ 72,679	\$ 84,266	16%
GHHOverlay Zone	\$ 24,096	\$ 27,832	16%	\$ 53,395	\$ 61,583	15%	\$ 65,131	\$ 74,462	14%
GHHOverlay Zone 10- minute drivetime	\$ 21,202	\$ 24,521	16%	\$ 47,812	\$ 55,647	16%	\$ 58,703	\$ 67,282	15%
GHHOverlay Zone 20- minute drivetime	\$ 23,257	\$ 27,238	17%	\$ 45,001	\$ 54,102	20%	\$ 59,577	\$ 69,116	16%
GHHOverlay Zone 30- minute drivetime	\$ 26,633	\$ 31,351	18%	\$ 48,101	\$ 57,469	19%	\$ 66,346	\$ 77,619	17%

Annual Income Growth -see chart

	2012 Per Capita Income	2017 Per Capita Income	2012 Average Household Income	2017 Average Household Income
Atlanta Metropolitan Statistical Area	\$ 27,224	\$ 31,596	\$ 72,679	\$ 84,266
GHHOverlay Zone	\$ 24,096	\$ 27,832	\$ 65,131	\$ 74,462
GHHOverlay Zone 10- minute drivetime	\$ 21,202	\$ 24,521	\$ 58,703	\$ 67,282
GHHOverlay Zone 20- minute drivetime	\$ 23,257	\$ 27,238	\$ 59,577	\$ 69,116
GHHOverlay Zone 30- minute drivetime	\$ 26,633	\$ 31,351	\$ 66,346	\$ 77,619

**Income Change Comparison Greater Hidden Hills and Metro Atlanta
2012 - 2017**



Source:ESRI Business Analyst

Metro Atlanta and Greater Hidden Hills Population 2012-2017

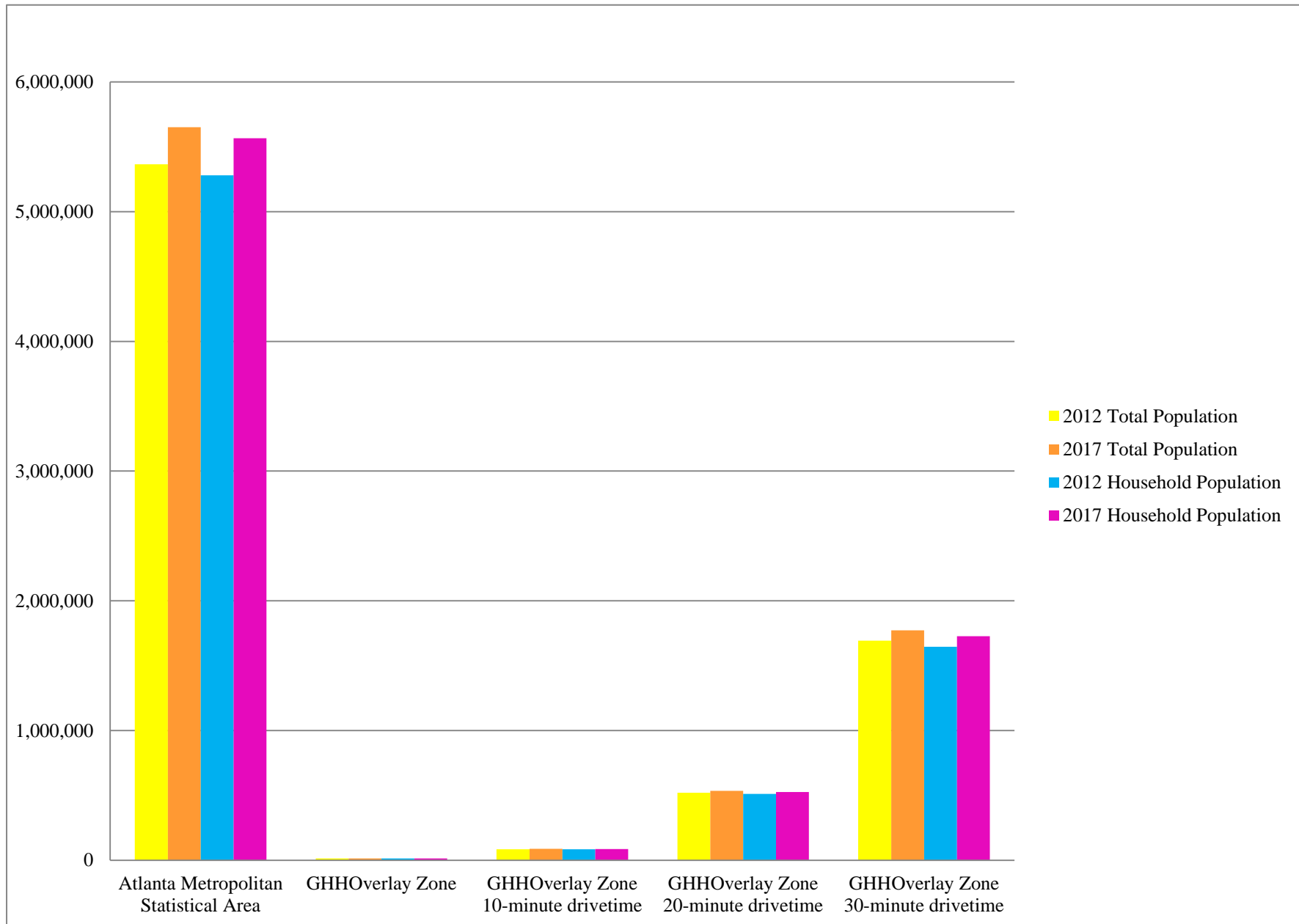
	2012 Total Population	2017 Total Population	Percent change	2012 Household Population	2017 Household Population	Percent change	2012 Family Population	2017 Family Population	Percent change
Atlanta Metropolitan Statistical Area	5,365,250	5,650,874	5%	5,280,792	5,566,416	5%	4,308,247	4,565,712	6%
GHHOverlay Zone	13,383	14,128	6%	13,328	14,072	6%	10,728	11,418	6%
GHHOverlay Zone 10- minute drivetime	84,417	87,099	3%	84,170	86,852	3%	68,700	71,382	4%
GHHOverlay Zone 20- minute drivetime	519,669	534,486	3%	511,490	526,307	3%	397,494	411,892	4%
GHHOverlay Zone 30- minute drivetime	1,693,048	1,773,148	5%	1,646,212	1,726,312	5%	1,220,955	1,286,491	5%

Source: ESRI Business Analyst

Household: # in "house"

Family population -- must be related in "house"

Metro Atlanta and Greater Hidden Hills Population 2012-2017



Comparison Recreation Spending 2012

Entertainment and Recreation Spending				
	2012 Total Population	Entertainment/ Recreation	Spending Per Capita	Compared to SMSA
Atlanta Metropolitan Statistical Area	5,365,250	\$ 6,718,875,294	\$1,252	
GHHOverlay Zone	13,383	\$ 14,877,508	\$1,112	-\$141
GHHOverlay Zone 10-minute drivetime	84,417	\$ 83,515,394	\$989	-\$263
GHHOverlay Zone 20-minute drivetime	519,669	\$ 551,597,906	\$1,061	-\$191
GHHOverlay Zone 30-minute drivetime	1,693,048	\$ 2,016,497,842	\$1,191	-\$61

Social, Recreation, Civic Clubs Spending				
	2012 Total Population	Soc/Rec/Civic Clubs Member Fee	Spending Per Capita	Compared to SMSA
Atlanta Metropolitan Statistical Area	5,365,250	\$ 346,933,605	\$65	
GHHOverlay Zone	13,383	\$ 754,432	\$56	-\$8
GHHOverlay Zone 10-minute drivetime	84,417	\$ 4,326,604	\$51	-\$13
GHHOverlay Zone 20-minute drivetime	519,669	\$ 28,106,386	\$54	-\$11
GHHOverlay Zone 30-minute drivetime	1,693,048	\$ 101,321,094	\$60	-\$5

Comparison Recreation Spending 2012

Participator Sports Fees, excluding Trips				
	2012 Total Population	Part Sport Fees excluding Trips	Spending Per Capita	Compared to SMSA
Atlanta Metropolitan Statistical Area	5,365,250	\$ 246,427,763	\$46	
GHHOverlay Zone	13,383	\$ 546,028	\$41	-\$5
GHHOverlay Zone 10-minute drivetime	84,417	\$ 3,097,173	\$37	-\$9
GHHOverlay Zone 20-minute drivetime	519,669	\$ 20,131,801	\$39	-\$7
GHHOverlay Zone 30-minute drivetime	1,693,048	\$ 72,651,019	\$43	-\$3

Recreational Lessons				
	2012 Total Population	Fees for Recreational Lessons	Spending Per Capita	Compared to SMSA
Atlanta Metropolitan Statistical Area	5,365,250	\$ 249,484,624	\$47	
GHHOverlay Zone	13,383	\$ 513,246	\$38	-\$8
GHHOverlay Zone 10-minute drivetime	84,417	\$ 2,894,592	\$34	-\$12
GHHOverlay Zone 20-minute drivetime	519,669	\$ 19,818,364	\$38	-\$8
GHHOverlay Zone 30-minute drivetime	1,693,048	\$ 73,988,631	\$44	-\$3

Comparison Recreation Spending 2012

	Pet Services			
	2012 Total Population	Pet Services	Spending Per Capita	Compared to SMSA
Atlanta Metropolitan Statistical Area	5,365,250	\$ 104,017,123	\$19	
GHHOverlay Zone	13,383	\$ 227,455	\$17	-\$2
GHHOverlay Zone 10- minute drivetime	84,417	\$ 1,303,430	\$15	-\$4
GHHOverlay Zone 20- minute drivetime	519,669	\$ 8,482,419	\$16	-\$3
GHHOverlay Zone 30- minute drivetime	1,693,048	\$ 30,445,416	\$18	-\$1

	Sports, Recreation, Exercise Equipment			
	2012 Total Population	Sports/ Recreation / Exercise Equipment	Spending Per Capita	Compared to SMSA
Atlanta Metropolitan Statistical Area	5,365,250	\$ 318,966,096	\$59	
GHHOverlay Zone	13,383	\$ 703,501	\$53	-\$7
GHHOverlay Zone 10- minute drivetime	84,417	\$ 3,860,743	\$46	-\$14
GHHOverlay Zone 20- minute drivetime	519,669	\$ 25,772,071	\$50	-\$10
GHHOverlay Zone 30- minute drivetime	1,693,048	\$ 95,289,874	\$56	-\$3

Health Care Spending Comparison of SMSA and Hidden Hills Area

	2012 Total Population	Health Care	Per Capita	Medicare Payments	Per Capita
Atlanta-Sandy Springs-Marietta, GA Metropolitan Statistical Area	5,365,250	\$ 8,674,840,426	\$ 1,617	\$ 865,676,213	\$ 161
GHHOverlay Zone	13,383	\$ 18,998,263	\$ 1,420	\$ 1,835,529	\$ 137
GHHOverlay Zone 10 minute drivetime	84,417	\$ 109,978,612	\$ 1,303	\$ 11,066,333	\$ 131
GHHOverlay Zone 20 minute drivetime	519,669	\$ 715,847,013	\$ 1,378	\$ 72,997,991	\$ 140
GHHOverlay Zone 30 minute drivetime	1,693,048	\$ 2,551,559,792	\$ 1,507	\$ 256,857,842	\$ 152

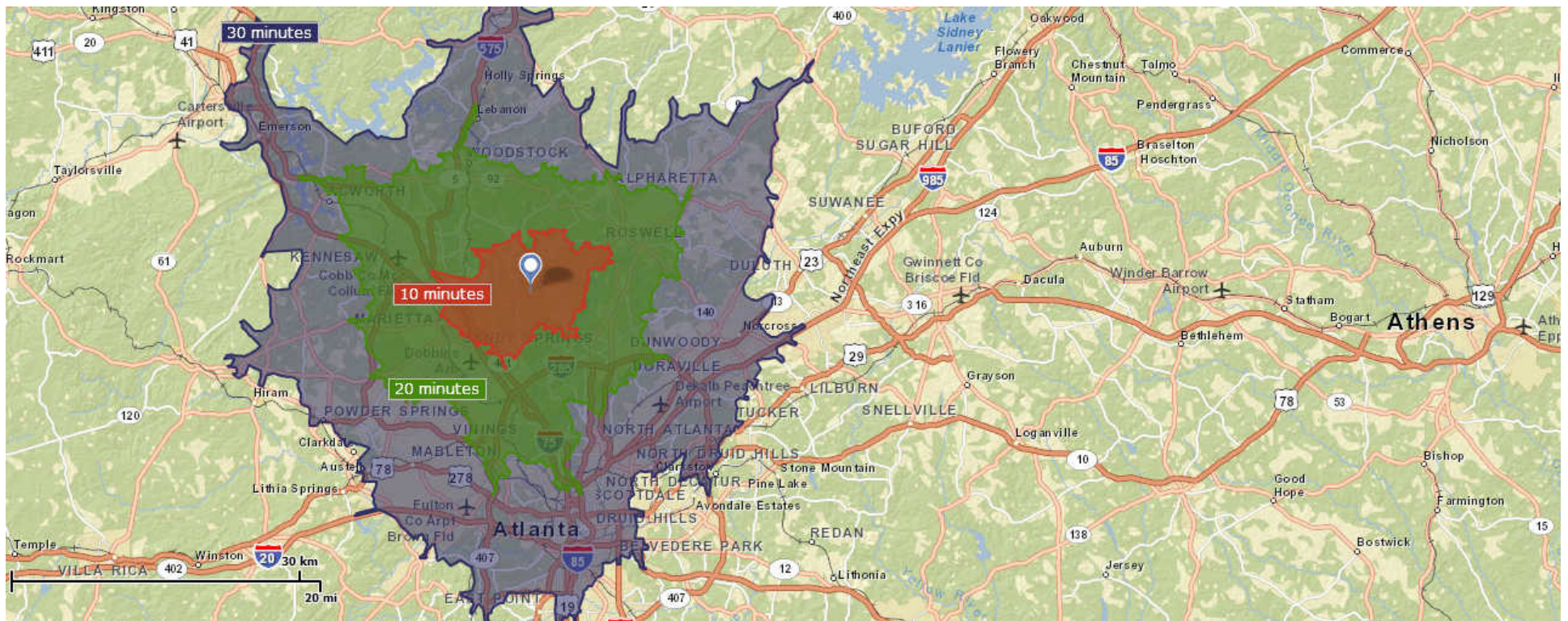
	2012 Total Population	Medical Services	Per Capita	Convalescent/N ursing Home Care	Per Capita
Atlanta-Sandy Springs-Marietta, GA Metropolitan Statistical Area	5,365,250	\$ 2,063,117,897	\$ 385	\$ 24,039,317	\$ 4
GHHOverlay Zone	13,383	\$ 4,537,868	\$ 339	\$ 44,361	\$ 3
GHHOverlay Zone 10 minute drivetime	84,417	\$ 26,011,592	\$ 308	\$ 262,373	\$ 3
GHHOverlay Zone 20 minute drivetime	519,669	\$ 169,066,006	\$ 325	\$ 1,972,440	\$ 4
GHHOverlay Zone 30 minute drivetime	1,693,048	\$ 605,001,335	\$ 357	\$ 7,557,482	\$ 4

This section compares the Isakson Living area with the Greater Hidden Hills area. It provides data on the types of businesses, the ages, the income, and the restaurant dining expenditures in each area.

Map of New Senior Living Community in Cobb County

Dot: 3540 Roswell Road, Marietta, GA – site of Isakson Living, a proposed \$200 million, 987-unit senior living facility on 54 acres of undeveloped land in east Cobb County.

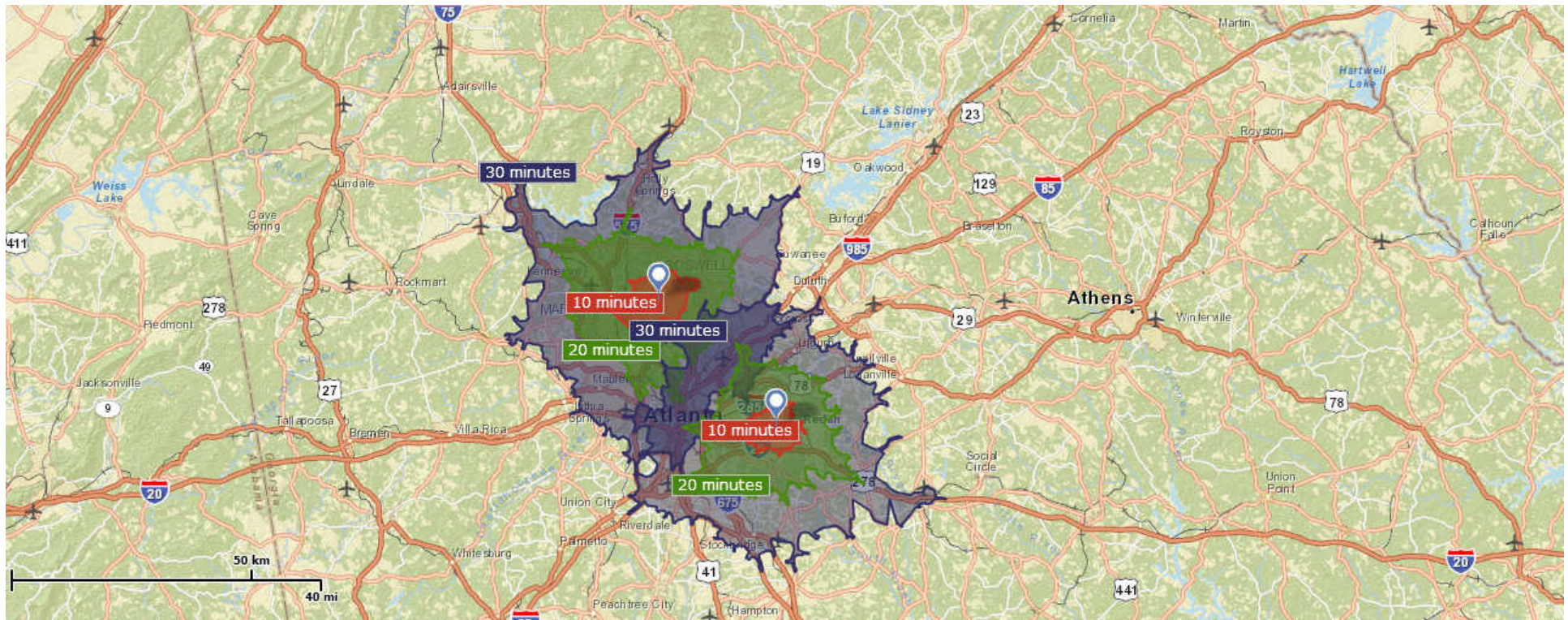
Orange, green and blue shades: driving times from the dot (10, 20 and 30-minute increments)



Map of New Senior Living Community in Cobb County and the Greater Hidden Hills Area, both with 10, 20, and 30-minute drive time increments from dot

Upper dot: 3540 Roswell Road, Marietta, GA – site of Isakson Living, a proposed \$200 million, 987-unit senior living facility on 54 acres of undeveloped land in east Cobb County.

Lower Dot: 5001 Biffle Road (the clubhouse), Stone Mountain, GA





Business Summary

Atlanta-Sandy Springs-Marietta, GA Metropolitan Statistical Area
 HH Overlay 30-min from 5001 Biffle Rd, Stone Mountain, GA, 30088
 Isaakson 30-min from 3540 Roswell Rd, Marietta, GA, 30062

Data for all businesses in area		Atlanta-Sandy Springs-Mar...		HH Overlay 0 - 30 minutes		3540 Roswell Rd, Marietta0 - 30	
Total Businesses:		386,512		135,527		162,479	
Total Employees:		2,287,741		976,869		1,150,658	
Total Residential Population:		5,365,250		1,693,048		1,911,671	
Employee/Residential Population Ratio:		0.43		0.58		0.60	

by SIC Codes	Businesses		Employees		Businesses		Employees		Businesses		Employees	
	Number	Percent	Number	Percent	Number	Percent	Number	Percent	Number	Percent	Number	Percent
Agriculture & Mining	9,192	2.4%	34,170	1.5%	2,182	1.6%	9,470	1.0%	2,813	1.7%	13,569	1.2%
Construction	32,098	8.3%	132,332	5.8%	8,396	6.2%	37,177	3.8%	10,586	6.5%	53,492	4.6%
Manufacturing	11,913	3.1%	169,797	7.4%	3,864	2.9%	61,780	6.3%	5,273	3.2%	73,758	6.4%
Transportation	13,334	3.4%	97,198	4.2%	5,036	3.7%	51,862	5.3%	3,872	2.4%	45,017	3.9%
Communication	3,605	0.9%	37,657	1.6%	1,505	1.1%	19,815	2.0%	1,916	1.2%	27,440	2.4%
Utility	881	0.2%	12,787	0.6%	237	0.2%	5,770	0.6%	351	0.2%	7,415	0.6%
Wholesale Trade	16,784	4.3%	109,630	4.8%	5,958	4.4%	41,159	4.2%	7,989	4.9%	55,249	4.8%
Retail Trade Summary	49,657	12.8%	390,179	17.1%	18,368	13.6%	149,675	15.3%	20,920	12.9%	180,120	15.7%
Home Improvement	1,901	0.5%	20,693	0.9%	482	0.4%	5,625	0.6%	725	0.4%	7,353	0.6%
General Merchandise Stores	1,079	0.3%	48,769	2.1%	392	0.3%	18,341	1.9%	393	0.2%	20,617	1.8%
Food Stores	4,936	1.3%	61,646	2.7%	1,938	1.4%	22,064	2.3%	1,936	1.2%	25,663	2.2%
Auto Dealers, Gas Stations, Auto Aftermarket	4,926	1.3%	35,112	1.5%	1,597	1.2%	11,236	1.2%	1,759	1.1%	14,178	1.2%
Apparel & Accessory Stores	4,552	1.2%	24,100	1.1%	1,928	1.4%	10,092	1.0%	2,050	1.3%	11,572	1.0%
Furniture & Home Furnishings	4,664	1.2%	22,366	1.0%	1,682	1.2%	9,098	0.9%	2,070	1.3%	11,646	1.0%
Eating & Drinking Places	11,938	3.1%	113,279	5.0%	5,036	3.7%	48,905	5.0%	5,657	3.5%	58,668	5.1%
Miscellaneous Retail	15,661	4.1%	64,214	2.8%	5,314	3.9%	24,314	2.5%	6,331	3.9%	30,423	2.6%
Finance, Insurance, Real Estate Summary	32,071	8.3%	161,198	7.0%	11,964	8.8%	76,203	7.8%	15,706	9.7%	96,357	8.4%
Banks, Savings & Lending Institutions	3,967	1.0%	33,158	1.4%	1,493	1.1%	13,906	1.4%	2,034	1.3%	18,665	1.6%
Securities Brokers	1,973	0.5%	9,465	0.4%	809	0.6%	4,818	0.5%	1,168	0.7%	6,865	0.6%
Insurance Carriers & Agents	4,440	1.1%	31,047	1.4%	1,527	1.1%	13,797	1.4%	2,175	1.3%	18,628	1.6%
Real Estate, Holding, Other Investment Offices	21,691	5.6%	87,528	3.8%	8,134	6.0%	43,683	4.5%	10,329	6.4%	52,199	4.5%
Services Summary	214,363	55.5%	1,011,964	44.2%	76,798	56.7%	437,026	44.7%	91,996	56.6%	527,918	45.9%
Hotels & Lodging	1,396	0.4%	21,228	0.9%	598	0.4%	13,115	1.3%	681	0.4%	13,309	1.2%
Automotive Services	7,685	2.0%	30,342	1.3%	2,721	2.0%	12,959	1.3%	2,752	1.7%	13,128	1.1%
Motion Pictures & Amusements	9,255	2.4%	36,736	1.6%	3,823	2.8%	15,025	1.5%	4,118	2.5%	18,405	1.6%
Health Services	15,972	4.1%	132,954	5.8%	6,488	4.8%	65,083	6.7%	7,833	4.8%	70,164	6.1%
Legal Services	6,353	1.6%	26,950	1.2%	3,525	2.6%	17,664	1.8%	4,208	2.6%	20,288	1.8%
Education Institutions & Libraries	5,300	1.4%	139,609	6.1%	2,094	1.5%	52,786	5.4%	2,183	1.3%	52,132	4.5%
Other Services	168,402	43.6%	624,145	27.3%	57,548	42.5%	260,393	26.7%	70,220	43.2%	340,492	29.6%
Government	2,614	0.7%	130,829	5.7%	1,219	0.9%	86,933	8.9%	1,057	0.7%	70,323	6.1%
Totals	386,512	100%	2,287,741	100%	135,527	100%	976,869	100%	162,479	100%	1,150,658	100%

Source: Copyright 2012 Dun & Bradstreet, Inc. All rights reserved. Esri Total Residential Population forecasts for 2012. August 5, 2013



Business Summary

Atlanta-Sandy Springs-Marietta, GA Metropolitan Statistical Area
 HH Overlay 30-min from 5001 Biffle Rd, Stone Mountain, GA, 30088
 Isaakson 30-min from 3540 Roswell Rd, Marietta, GA, 30062

	SMSA				HH Overlay 0-30 minutes				3540 Roswell Rd, Marietta			
	Businesses		Employees		Businesses		Employees		Businesses		Employees	
by NAICS Codes	Number	Percent	Number	Percent	Number	Percent	Number	Percent	Number	Percent	Number	Percent
Agriculture, Forestry, Fishing & Hunting	2,299	0.6%	7,246	0.3%	321	0.2%	1,273	0.1%	550	0.3%	2,422	0.2%
Mining	165	0.0%	1,939	0.1%	52	0.0%	706	0.1%	70	0.0%	817	0.1%
Utilities	318	0.1%	8,297	0.4%	74	0.1%	4,337	0.4%	124	0.1%	5,513	0.5%
Construction	33,044	8.5%	136,180	6.0%	8,733	6.4%	38,683	4.0%	11,077	6.8%	55,681	4.8%
Manufacturing	11,469	3.0%	166,504	7.3%	3,667	2.7%	59,897	6.1%	5,048	3.1%	71,180	6.2%
Wholesale Trade	16,649	4.3%	108,963	4.8%	5,913	4.4%	40,910	4.2%	7,910	4.9%	54,894	4.8%
Retail Trade	36,927	9.6%	273,693	12.0%	13,041	9.6%	99,341	10.2%	14,939	9.2%	120,091	10.4%
Motor Vehicle & Parts Dealers	3,900	1.0%	28,438	1.2%	1,244	0.9%	8,976	0.9%	1,378	0.8%	11,575	1.0%
Furniture & Home Furnishings Stores	2,423	0.6%	10,183	0.4%	806	0.6%	3,723	0.4%	1,056	0.6%	5,322	0.5%
Electronics & Appliance Stores	2,299	0.6%	12,850	0.6%	911	0.7%	5,272	0.5%	1,038	0.6%	6,507	0.6%
Bldg Material & Garden Equipment & Supplies Dealers	1,846	0.5%	20,467	0.9%	473	0.3%	5,573	0.6%	711	0.4%	7,314	0.6%
Food & Beverage Stores	4,631	1.2%	60,570	2.6%	1,858	1.4%	21,521	2.2%	1,820	1.1%	25,369	2.2%
Health & Personal Care Stores	2,399	0.6%	17,480	0.8%	842	0.6%	5,772	0.6%	1,010	0.6%	7,302	0.6%
Gasoline Stations	1,066	0.3%	6,822	0.3%	368	0.3%	2,305	0.2%	396	0.2%	2,661	0.2%
Clothing & Clothing Accessories Stores	5,477	1.4%	26,777	1.2%	2,304	1.7%	11,278	1.2%	2,475	1.5%	12,977	1.1%
Sport Goods, Hobby, Book, & Music Stores	2,120	0.5%	9,437	0.4%	691	0.5%	3,292	0.3%	930	0.6%	4,796	0.4%
General Merchandise Stores	1,079	0.3%	48,769	2.1%	392	0.3%	18,341	1.9%	393	0.2%	20,617	1.8%
Miscellaneous Store Retailers	7,587	2.0%	26,830	1.2%	2,520	1.9%	11,702	1.2%	3,007	1.9%	13,554	1.2%
Nonstore Retailers	2,100	0.5%	5,070	0.2%	631	0.5%	1,586	0.2%	726	0.4%	2,096	0.2%
Transportation & Warehousing	10,891	2.8%	87,827	3.8%	4,065	3.0%	46,027	4.7%	3,012	1.9%	35,438	3.1%
Information	9,067	2.3%	74,541	3.3%	3,853	2.8%	36,922	3.8%	4,692	2.9%	52,397	4.6%
Finance & Insurance	14,982	3.9%	86,874	3.8%	5,531	4.1%	38,552	3.9%	7,607	4.7%	51,588	4.5%
Central Bank/Credit Intermediation & Related	4,312	1.1%	34,692	1.5%	1,600	1.2%	14,728	1.5%	2,168	1.3%	19,723	1.7%
Securities, Commodity Contracts & Other Financial	5,937	1.5%	19,773	0.9%	2,275	1.7%	9,159	0.9%	3,103	1.9%	12,262	1.1%
Insurance Carriers & Related Activities; Funds, Trusts	4,733	1.2%	32,409	1.4%	1,655	1.2%	14,665	1.5%	2,336	1.4%	19,603	1.7%
Real Estate, Rental & Leasing	17,222	4.5%	76,317	3.3%	6,478	4.8%	36,826	3.8%	7,878	4.8%	42,619	3.7%
Professional, Scientific & Tech Services	61,290	15.9%	240,914	10.5%	23,336	17.2%	111,053	11.4%	30,981	19.1%	152,752	13.3%
Legal Services	6,547	1.7%	27,570	1.2%	3,600	2.7%	17,896	1.8%	4,287	2.6%	20,607	1.8%
Management of Companies & Enterprises	1,378	0.4%	8,616	0.4%	472	0.3%	4,948	0.5%	740	0.5%	6,708	0.6%
Administrative & Support & Waste Management &	81,626	21.1%	259,684	11.4%	24,579	18.1%	100,317	10.3%	30,105	18.5%	130,786	11.4%
Educational Services	6,302	1.6%	140,877	6.2%	2,410	1.8%	52,943	5.4%	2,637	1.6%	53,047	4.6%
Health Care & Social Assistance	22,774	5.9%	179,996	7.9%	9,403	6.9%	85,725	8.8%	10,315	6.3%	89,896	7.8%
Arts, Entertainment & Recreation	6,662	1.7%	28,409	1.2%	2,695	2.0%	11,726	1.2%	2,970	1.8%	14,360	1.2%
Accommodation & Food Services	13,382	3.5%	134,498	5.9%	5,662	4.2%	61,934	6.3%	6,358	3.9%	71,957	6.3%
Accommodation	1,349	0.3%	20,815	0.9%	586	0.4%	12,966	1.3%	664	0.4%	13,133	1.1%
Food Services & Drinking Places	12,033	3.1%	113,683	5.0%	5,076	3.7%	48,968	5.0%	5,694	3.5%	58,824	5.1%
Other Services (except Public Administration)	37,442	9.7%	139,801	6.1%	14,038	10.4%	60,811	6.2%	14,403	8.9%	68,072	5.9%
Automotive Repair & Maintenance	6,232	1.6%	21,854	1.0%	2,139	1.6%	8,460	0.9%	2,204	1.4%	8,881	0.8%
Public Administration	2,623	0.7%	126,565	5.5%	1,205	0.9%	83,937	8.6%	1,062	0.7%	70,441	6.1%
Total	386,512	100%	2,287,741	100%	135,527	100%	976,869	100%	162,479	100%	1,150,658	100%

Compare Ages Isakson Living and Hidden Hills Areas

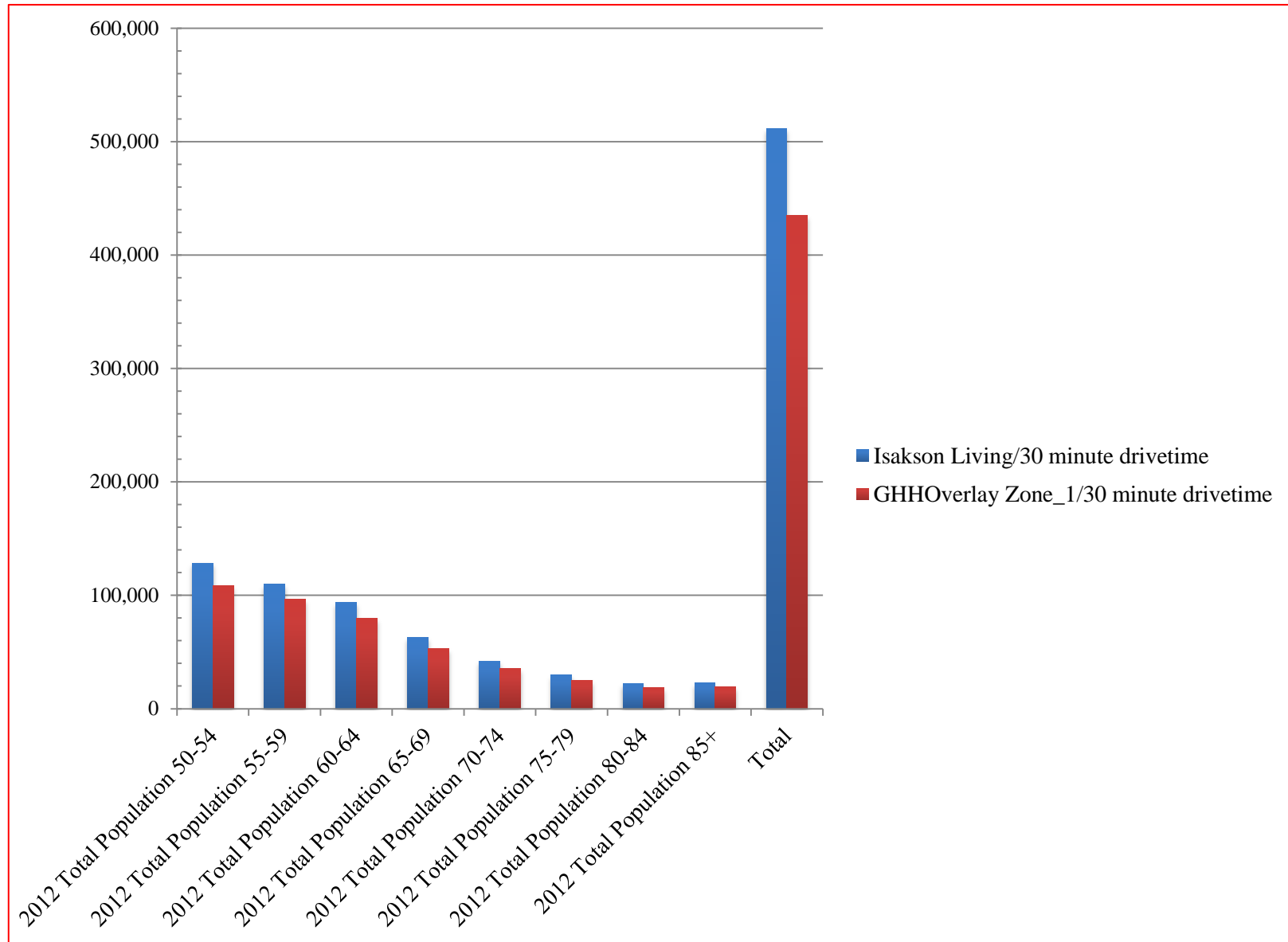
	2012 Total Population 50-54	2012 Total Population 55-59	2012 Total Population 60-64	2012 Total Population 65-69	2012 Total Population 70-74	2012 Total Population 75-79	2012 Total Population 80-84	2012 Total Population 85+	Total, Ages 50-84
Isakson Living/10 minute drivetime	10,258	9,579	8,983	5,690	3,458	2,302	1,600	1,436	43,306
Isakson Living/20 minute drivetime	49,743	44,188	39,280	25,789	16,235	11,424	8,839	9,595	205,093
Isakson Living/30 minute drivetime	128,423	109,638	93,778	62,828	42,006	29,759	21,933	22,840	511,205
GHHOverlay Zone_1/10 minute drivetime	6,600	5,957	4,429	2,583	1,491	903	622	476	23,061
GHHOverlay Zone_1/20 minute drivetime	36,972	33,874	27,687	17,749	11,567	7,835	5,656	5,263	146,603
GHHOverlay Zone_1/30 minute drivetime	108,675	96,164	79,705	53,059	35,148	24,821	18,473	19,005	435,050

Source ESRI

	2012 Total Population 50-54	2012 Total Population 55-59	2012 Total Population 60-64	2012 Total Population 65-69	2012 Total Population 70-74	2012 Total Population 75-79	2012 Total Population 80-84	2012 Total Population 85+	Total
Isakson Living/30 minute drivetime	128423	109638	93778	62828	42006	29759	21933	22,840	511,205
GHHOverlay Zone_1/30 minute drivetime	108675	96164	79705	53059	35148	24821	18473	19,005	435,050

See chart next page

Compare Ages Isakson Living and Hidden Hills Areas



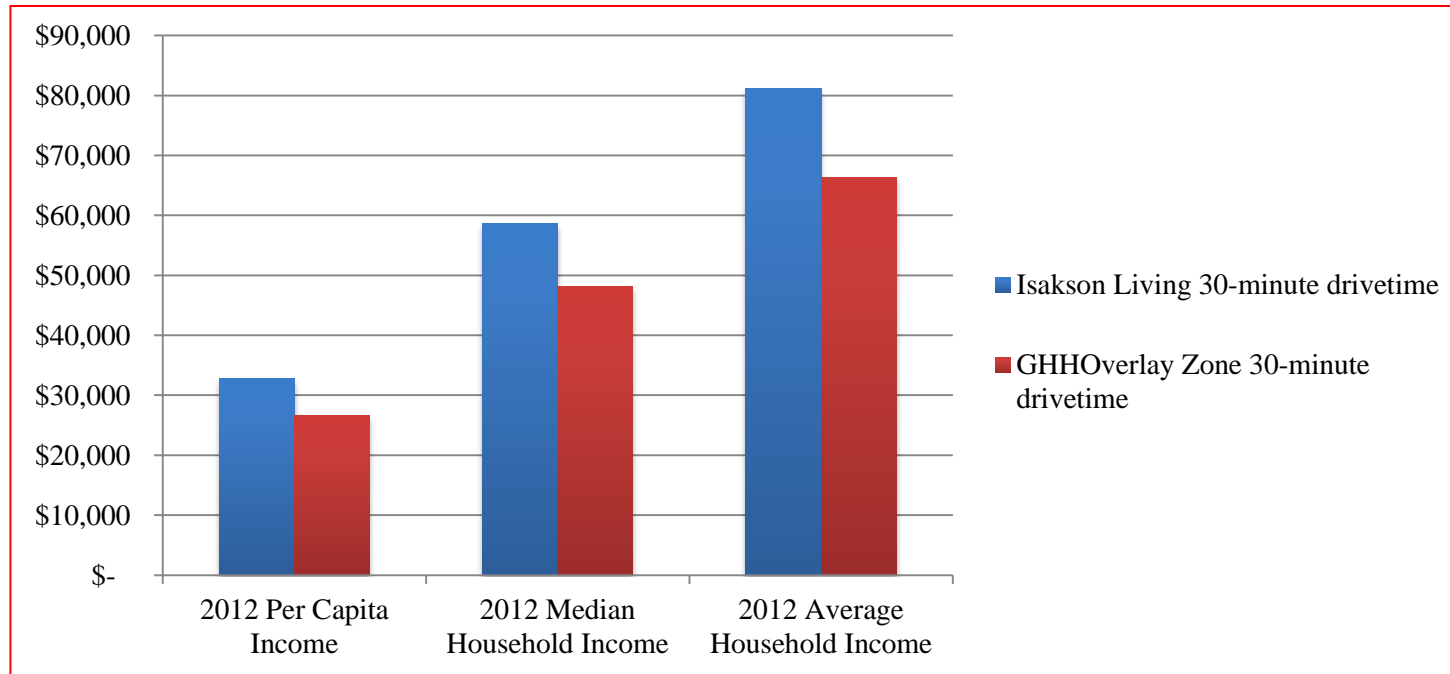
Income Comparison Isakson Living and Hidden Hills Areas

	2012 Per Capita Income	2012 Median Household Income	2012 Average Household Income
Isakson Living/10 minute drivetime	\$ 37,757	\$ 78,984	\$ 98,437
Isakson Living/20 minute drivetime	\$ 35,427	\$ 64,079	\$ 86,936
Isakson Living/30 minute drivetime	\$ 32,859	\$ 58,689	\$ 81,195
GHHOverlay Zone 10 minute drivetime	\$ 21,202	\$ 47,812	\$ 58,703
GHHOverlay Zone 20 minute drivetime	\$ 23,257	\$ 45,001	\$ 59,577
GHHOverlay Zone 30 minute drivetime	\$ 26,633	\$ 48,101	\$ 66,346

	2012 Per Capita Income	2012 Median Household Income	2012 Average Household Income
Isakson Living 30-minute drivetime	\$ 32,859	\$ 58,689	\$ 81,195
GHHOverlay Zone 30-minute drivetime	\$ 26,633	\$ 48,101	\$ 66,346

See chart next page

Income Comparison Isakson Living and Hidden Hills Areas



Restaurant Comparison - Isakson Living and Hidden Hills Areas

	GHHOverlay Zone 10 minute drivetime	GHHOverlay Zone 20 minute drivetime	GHHOverlay Zone 30 minute drivetime	Isakson Living/10 minute drivetime	Isakson Living/20 minute drivetime	Isakson Living/30 minute drivetime
Family rest/steak house/6 mo	46,078	289,549	937,145	77,908	434,025	1,107,565
Fam rest/steak hse/6 mo,Golden Corral	6,930	35,175	101,225	5,596	34,887	93,155
Fam rest/steak hse/6 mo,IHOP	8,569	52,262	165,183	13,265	78,426	198,698
Fam rest/steak hse/6 mo,Olive Garden	11,684	73,777	231,325	21,422	117,365	290,415
Fam rest/steak hse/6 mo,Red Lobster	10,203	59,140	180,028	13,675	77,805	205,093
Fast food/drive-in rest/6 mo	56,072	350,561	1,144,456	88,273	503,184	1,309,648

See chart next page

Restaurant Comparison - Isakson Living and Hidden Hills Areas

